

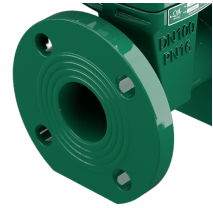


#### Material and Manufacturing Standard

- Design and manufacture in accordance with DIN 3352
- Structure length in accordance with DIN 3202
- Flange standard in accordance with DIN 2632-2633
- Pressure test standard accordance with DIN 3230



- The wedge is DI & EPDM , the EPDM proportion up to 50%



- Flange standard in accordance with DIN 2632-2633

#### Coating Specifications

- Both inner and out part is fusion bonded epoxy coating
- high-quality thermosetting epoxy powder coating for the corrosion protection .
- the thickness is 250µm minimum .

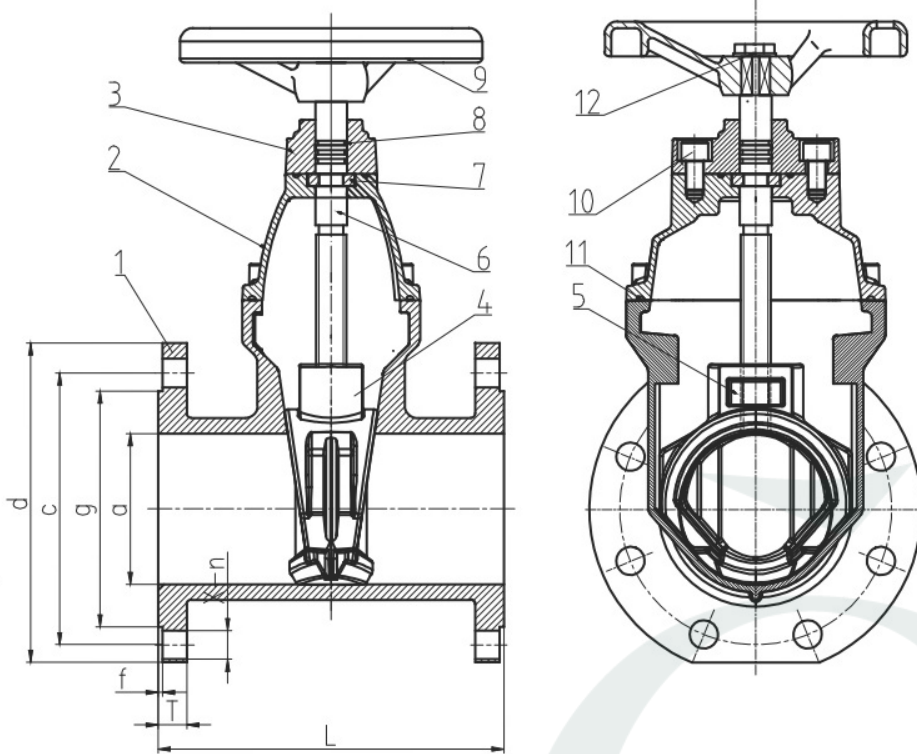
#### BARIQ Gate Valve 7000 introduction

The valves disc is rubber-packed to get excellent sealing effect by the rubber's resilient deformation. Non-rising resilient seated gate valves solve the problem in general gate valves such as leakage, rusting etc. and saves installation space. It is used widely in tap water industry, sewage treatment, shipping construction, petroleum, chemicals, food, pharmacy, textile, electric power, metallurgy and energy system's pipeline to adjust and shut off fluids.

#### BARIQ Gate Valve Features

- The body is Ductile Iron GGG40
- The valves disc is rubber-packed to ensure leakage prevention by the rubber's resilient deformation.
- Both inner and out part is epoxy coating, the thickness up to 250µm , To achieve more protection from rust to be used in sewage system.
- The wedge is coated with EPDM .
- The valve stem is brass to operate easily and prevent block

## Technical Specification



### Bariq 7000 Parameters

Part Number	DN	D	C	T	F	G	F4	Weight	
								KG	
7050	50	165	125	19	3	99	150	9.0	
7065	65	185	145	19	3	118	170	12.0	
7080	80	200	160	19	3	132	180	14.0	
7100	100	220	180	19	3	156	190	19.0	
7125	125	250	210	19	3	184	200	24.0	
7150	150	285	240	19	3	211	210	30.0	
7200	200	340	295	20	3	266	230	50.0	
7250	250	405	355	22	3	319	250	76.0	
7300	300	460	410	24.5	4	370	270	107.0	

### Material Specification

NO	Name	Material
1	Body	GGG40
2	Cover	GGG40
3	Gland	GGG40
4	Disc	GGG40+EPDM
5	Stem Nut	BRASS
6	Stem	SS420
7	Locating Sleeve	BRASS
8	O ring	SILICON RUBBER
9	Handwheel	GGG40
10	Bolt	45
11	Sealing apron	EPDM
12	Screw	SS

### Inspection Specifications

Nominal pressure	PN	16
Seal Test pressure	BAR	17.6
Shell Test pressure	BAR	24
Working Temperature	°C	-10 ~ 120
Applicable		Water